

- 4:1 Input Range
- Efficiency to 89%
- Half-brick Package
- OCP/ OVP/ OTP
- continuous short circuit Protection
- Remote ON/OFF



Model Number	Input Voltage	Output Voltage	Output Current	Input No Load	Current Full Load	% Eff.
TP200W-24S33	10 -36 V	3.3 VDC	50 A	130 mA	7900 mA	87
TP200W-24S05	10 -36 V	5 VDC	40 A	150 mA	9580 mA	87
TP200W-24S12	10 -36 V	12 VDC	16.7 A	50 mA	9710 mA	86
TP200W-24S15	10 -36 V	15 VDC	13.3 A	50 mA	9560 mA	87
TP200W-24S24	10 -36 V	24 VDC	8.3 A	45 mA	9540 mA	87
TP200W-24S48	10 -36 V	48 VDC	4.2 A	60 mA	9770 mA	86
TP200W-48S33	18 -75 V	3.3 VDC	50 A	80 mA	3130 mA	88
TP200W-48S05	18 -75 V	5 VDC	40 A	80 mA	4680 mA	89
TP200W-48S12	18 -75 V	12 VDC	16.7 A	60 mA	4740 mA	88
TP200W-48S15	18 -75 V	15 VDC	13.3 A	60 mA	4720 mA	88
TP200W-48S24	18 -75 V	24 VDC	8.3 A	60 mA	4720 mA	88
TP200W-48S48	18 -75 V	48 VDC	4.2 A	45 mA	4830 mA	87

All Specifications are Typical at Nominal Line, Full load, and 25°C Unless Otherwise Noted / © TECHNO-PROJEKT 2009

Technische Änderungen vorbehalten / Technical changes reserved

R1520a

INPUT SPECIFICATIONS

INPUT UNDER-VOLTAGE LOCKOUT.....	24Vin power down	8.0V typ
	24Vin power up....	8.8V typ
	48Vin power down	16V typ
	48Vin power up....	17V typ
POSITIVE LOGIC REMOTE ON/OFF CONTROL		
Logic Compatibility	CMOS or Open Collector TTL, ref. to -Vin	
Module ON	>+3.5 to 75VDC or Open Circuit	
Module OFF.....	<1.8 Vdc	
INPUT FILTER.....		PI Type

OUTPUT SPECIFICATIONS

Voltage Accuracy.....		±1.5% max
Ripple and Noise, 20MHz BW	Vo = 3,3V & 5V.....	max. 100mVpp.
	Vo = 12V & 15V.....	max. 150mVpp.
	Vo = 24V.....	max. 240mVpp.
Temperature Coefficient		±0.03%/C max
Line Regulation		±0.2%.
Load Regulation		±0.2%.
External Trim Adj. Range		±10%
Short Circuit Protection		continuous
Over Voltage Protection.....		115 – 140%
Current Limit		110% - 150% Nominal Output

GENERAL SPECIFICATIONS

ISOLATION VOLTAGE.....	1500VDC max.
ISOLATION RESISTANCE	10 MOhm
SWITCHING FREQUENCY.....	250KHz typ.
OPERATING TEMPERATURE RANGE.....	-40°C TO +100°C
THERMAL SHUT DOWN; CASE TEMPERATURE	110°Cmax.
STORAGE TEMPERATURE RANGE.....	-55°C TO +105°C
CASE MATERIAL	Aluminium Base Plate with Plastic Case
DIMENSIONS	2,28×2,40×0.52 INCHES (57.9 × 61.0 × 13.2mm)

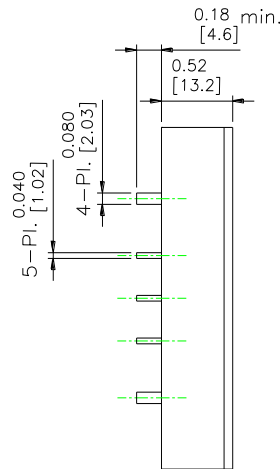
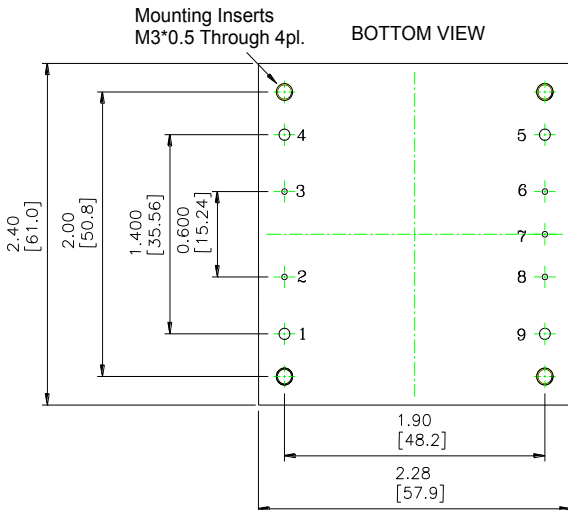
NOTE:

1. LINE REGULATION: Measured From High Line To Low Line
2. LOAD REGULATION: Measured From Full Load To Zero Load
3. Maximum Case Temperature Under Any Operating Condition Should Not Be Exceeded 105°C
4. Output ripple and noise is measured with 10µF tantalum and 1µF Ceramic capacitor across output
5. Suffix "-C" to the Model Number with Clear Mounting Insert (3.2mm diameter)

MECHANICAL SPECIFICATIONS

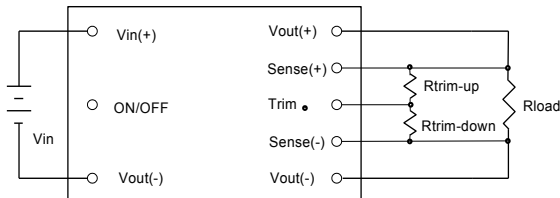
All Dimensions In Inches(mm)

Tolerances Inches: x.xx = ± 0.02, x.xxx = ± 0.010
Millimeter: x.x = ± 0.5, x.xx = ± 0.25



Pin	Function
1	+Vin
2	ON/OFF
3	CASE
4	-Vin
5	-Vout
6	-Sense
7	Trim
8	+Sense
9	+Vout

External Output TRIM



$$R_{trim-down} = \left[\frac{511}{\Delta\%} - 10.22 \right] k\Omega$$

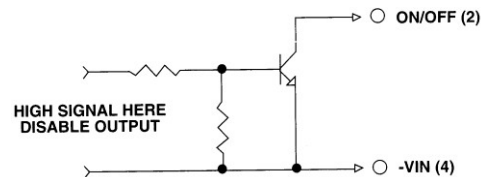
Example: reduction Vout -5%
With $\Delta\% = 5 \rightarrow R_{trim} = 92k\Omega$

$$R_{trim-up} = \left[\frac{5.11V_{out}(100+\Delta\%)}{1.225 \times \Delta\%} - \frac{511}{\Delta\%} - 10.22 \right] k\Omega$$

Example: Increasing Vout +5%
With $\Delta\% = 5 \rightarrow R_{trim} = 937k\Omega$

REMOTE ON/OFF CONTROL

Logic Compatibility CMOS or Open collector TTL
Modul ON >+3.5 to 75VDC or Open Circuit
Module OFF <1.2 Vdc



Technische Änderungen vorbehalten / Technical changes reserved

R1520a