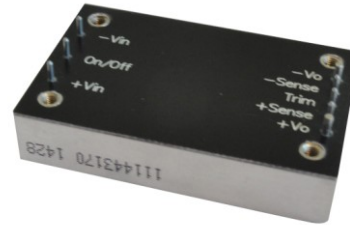


- **4:1 Input Range**
- **Efficiency to 92%**
- **Quarter-brick Package**
- **OTP/ OCP/ OVP**
- **continuous short circuit Protection**
- **safety Meets EN60950-1**



Model Number	Input Voltage	Output Voltage	Output Current max	Input Current No Load	Current Full Load	% Eff.
TPQ50W-24S3.3	9 – 36 V	3.3 VDC	10 A	100 mA	1528 mA	90
TPQ50W-24S05	9 – 36 V	5 VDC	10 A	100 mA	2277 mA	91
TPQ50W-24S12	9 – 36 V	12 VDC	4.16 A	100 mA	2261 mA	91
TPQ50W-24S15	9 – 36 V	15 VDC	3.33 A	100 mA	2287 mA	91
TPQ50W-24S24	9 – 36 V	24 VDC	2.08 A	60 mA	2311 mA	90
TPQ50W-24S48	9 – 36 V	48 VDC	1.04 A	60 mA	2311 mA	89
TPQ50W-48S3.3	18 – 75 V	3.3 VDC	10 A	60 mA	764 mA	90
TPQ50W-48S05	18 – 75 V	5 VDC	10 A	60 mA	1132 mA	92
TPQ50W-48S12	18 – 75 V	12 VDC	4.16 A	60 mA	1130 mA	92
TPQ50W-48S15	18 – 75 V	15 VDC	3.33 A	60 mA	1144 mA	91
TPQ50W-48S24	18 – 75 V	24 VDC	2.08 A	60 mA	1156 mA	91
TPQ50W-48S24	18 – 75 V	48 VDC	1.04 A	60 mA	1156 mA	89

All Specifications are Typical at Nominal Line, Full load, and 25°C Unless Otherwise Noted / © TP 2013

INPUT SPECIFICATIONS

INPUT UNDER-VOLTAGE LOCKOUT.....	24Vin power down8.0V typ	
	24Vin power up.....8.8V typ	
	48Vin power down16V typ	
	48Vin power up.....17V typ	
INPUT SURGE VOLTAGE (100ms max.)	24Vin 50Vdc max	
	48Vin 100Vdc max	
POSITIVE LOGIC REMOTE ON/OFF CONTROL		
Logic Compatibility	Open Collector TTL, ref. to -Vin	
Module ON	> 3.5V to 75V or Open Circuit	
Module OFF.....	<1.2 Vdc	
INPUT FILTER.....		PI Type

OUTPUT SPECIFICATIONS

Voltage Accuracy.....		±1.5% max
Ripple and Noise, 20MHz BW	Vo = 3,3V & 5V.....	max. 100mVpp.
	Vo = 12V & 15V.....	max. 150mVpp.
	Vo = 24V.....	max. 240mVpp.
	Vo = 48V.....	max. 480mVpp.
Temperature Coefficient		±0.03%/C max
Line Regulation		±0.2%.
Load Regulation		±0.2%.
External Trim Adj. Range		±10%
Short Circuit Protection		continuous
Over Voltage Protection % Vo nom.....		115 – 140%
Current Limit		110% - 160% Nominal Output
Start up time		20ms typ.

GENERAL SPECIFICATIONS

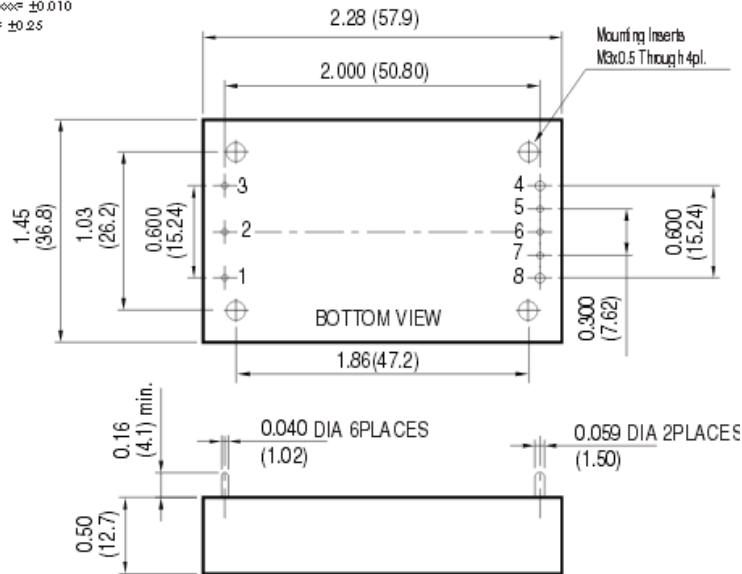
ISOLATION VOLTAGE.....	1500VDC max.
ISOLATION RESISTANCE	10 MOhm
ISOLATION CAPACITANCE	1000pF typ
SWITCHING FREQUENCY.....	300KHz typ.
OPERATING TEMPERATURE RANGE.....	-40°C TO +105°C
THERMAL SHUT DOWN; CASE TEMPERATURE	110°Cmax.
STORAGE TEMPERATURE RANGE.....	-55°C TO +125°C
CASE MATERIAL	Aluminium base plate with plastic case
DIMENSIONS	1,45×2,28×0.50 INCHES (36.8 × 57.9 × 12.7mm)
Weight	63g

NOTE:

1. LINE REGULATION: Measured From High Line To Low Line
2. LOAD REGULATION: Measured From Full Load To min Load
3. An external input capacitor 47µF for 48Vin-models are recommended to reduce input ripple voltage
4. Suffix "C" to the Model Number with Clear Mounting Insert (3.2mm Dia.)

MECHANICAL SPECIFICATIONS

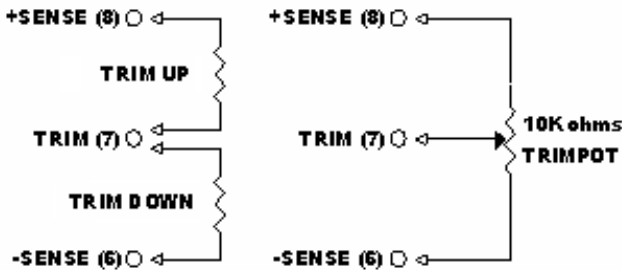
All Dimensions in Inches (mm.)
Tolerance Inches: XXX ±0.02, XXXX ±0.010
Millimeters: XX ±0.5, XXX ±0.25



Pin	Function
1	+Vin
2	ON/OFF
3	-Vin
4	-Vout
5	-Sense
6	Trim
7	+Sense
8	+Vout

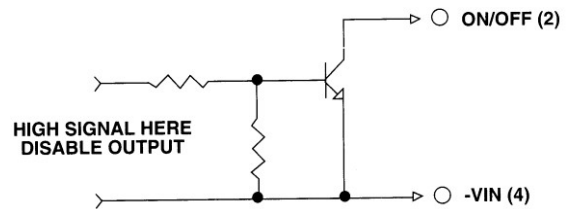
External Output TRIM

REMOTE ON/OFF CONTROL



Logic Compatibility
Modul ON
Module OFF

CMOS or Open collector TTL
>+3.5 to 75VDC or Open Circuit
<1.2 Vdc



POWER DERATING

Typical Derating curve for Natural Convection

